



RUNDLE PARK
EDMONTON ALBERTA
FEBRUARY 23 2025

TUNDRA
TOSS
4

POWERED BY
 PURSUIT OF MOTION
PHYSIOTHERAPY

The central graphic is a large circle with a pink-to-orange gradient top half and a white bottom half. The text 'RUNDLE PARK EDMONTON ALBERTA FEBRUARY 23 2025' is in white on the pink background. The word 'TUNDRA' is in black with white snow on its roof on the orange background. 'TOSS' is in a colorful, outlined font on the white background. Below it is a large pink number '4'. At the bottom of the circle, it says 'POWERED BY' followed by the Pursuit of Motion logo and 'PHYSIOTHERAPY'.



**Brock
Ciochetti**

president@edga.ca

TOURNAMENT TEAM

**Mike
Carey**

programming@edga.ca

**Darryl
Williams**

communications@edga.ca

LAND ACKNOWLEDGEMENT

We acknowledge Treaty 6 territory—the traditional and ancestral territory of the Cree, Dene, Blackfoot, Saulteaux and Nakota Sioux. We acknowledge that this territory is home to the Métis Settlements and the Métis Nation of Alberta, Regions 2, 3 and 4 within the historical Northwest Métis Homeland.



PRESENTING SPONSOR

**Thank you to
Pursuit of Motion Physiotherapy
for being the title sponsor of this event!**

**Be sure to check them out at
<https://www.pursuitofmotion.com/>**



PURSUITOFMOTION
PHYSIOTHERAPY

PRIZE SPONSOR

**Thank you to Wildman Disc Golf
for donating proximity prizes to the event!**

**Be sure to check him out at
<https://www.wildmandiscgolf.com/>**

**Free local pickup at Tundra Toss for orders made by Feb
21st**



PROXIMITY PRIZES

CTP
Pro - Hole 15
Ams - Hole 4
Women - Hole 10

Long Putt
Pro - Hole 8
Ams - Hole 11
Women - Hole 1

THANKS TO WILDMAN DISC GOLF FOR
THE PRIZE DONATIONS



**Please respect the tournament staff, other players,
and course by avoiding drinking alcohol, smoking,
vaping, littering, yelling, or excessively swearing
during the tournament. Non-compliance could result in
penalty strokes or disqualification.**



LOST DISCS

Please make sure that everyone on the card is spotting for everyone else. This will increase the pace of play.

Please adhere to the lost disc rule (802.06) when applicable.



PDGA STUFF

The Tundra Toss 3 is a PDGA sanctioned C-Tier event, which will adhere to all the tournament rules that can be found at <https://www.pdga.com/rules/official-rules-disc-golf>

All players must keep score.

[Link to Emergency Plan](#)

Access Code: TT25

No two metre rule

<https://www.pdga.com/tour/event/87782>

EDGA WELCOME DAY

Come get your 2025 EDGA bag tag, enter draws and buy some merch! All funds from the raffle and disc swap go towards the club.

Donated Disc Raffle: We've had some awesome members donate discs for us to raffle away. Winning raffle tickets will be posted after the event, so you don't have to stick around.

**Lunchtime Disc Swap: \$5 first disc; \$1 each other disc
Throw one or more used discs (in good condition; no starter set discs please) in the pile and get a draw ticket. Choose discs out of the pile when your ticket is drawn.**

SCHEDULE

8:00 am - 9:00 am- Check in at Tournament Central.

9:00 am - 9:15 am - Players meeting at Tournament Central.

9:30 am - 12:30 pm - Round 1.

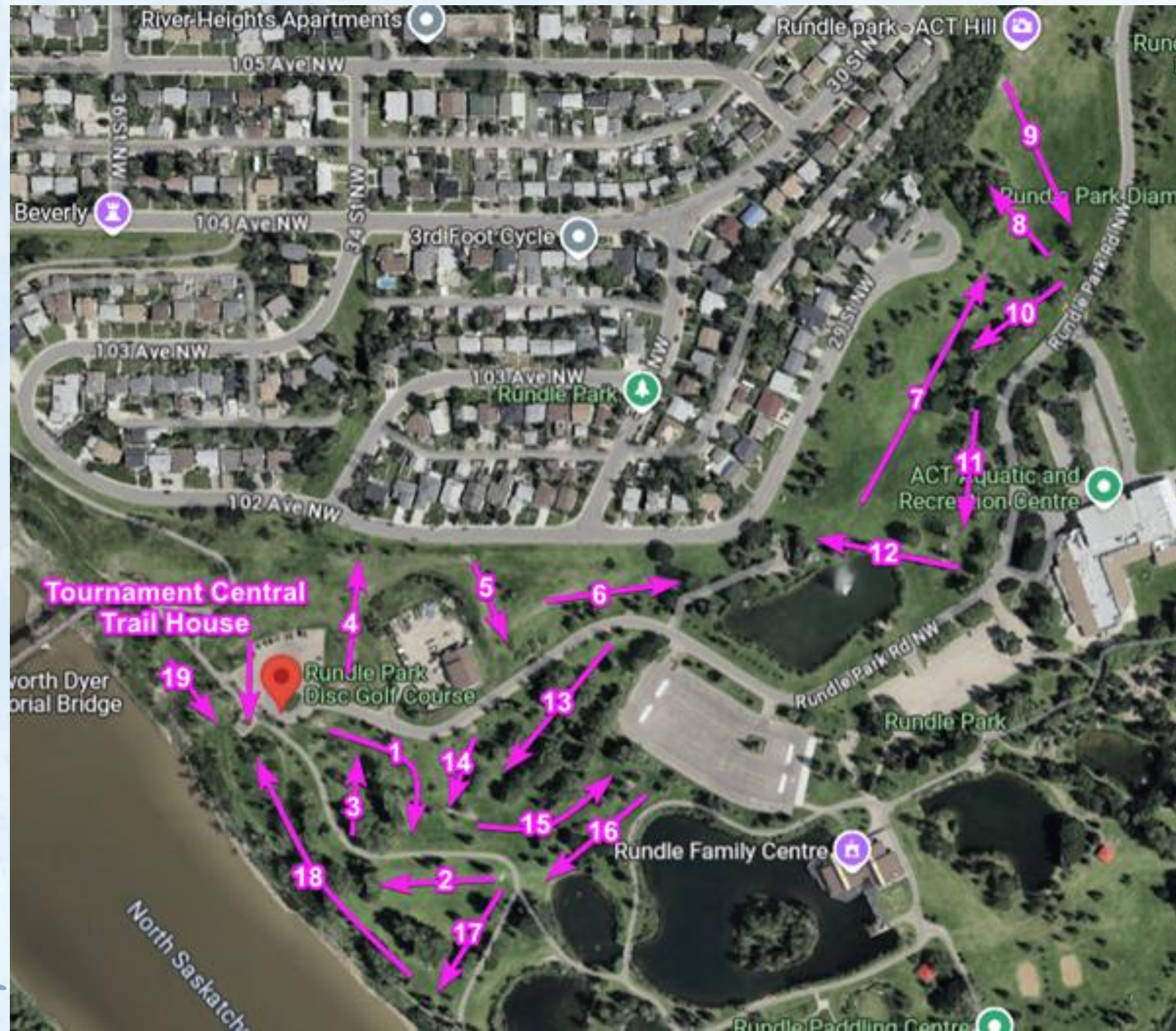
12:30 pm - 1:15 pm - Lunch.

1:30 pm - 4:30 pm - Round 2.

4:30 pm - 5:30 pm - Awards and draws.



SITE MAP



**Washrooms are
available at
Rundle Family
Centre and
ACT Centre**

OB AND MANDATORIES

All OB will be played as point of entry. There are no drop zones for OB.

The mandatory routes on hole 1 and 15 have designated drop zones if you cross on the wrong side. No other mandatory routes are in play.

HOLE 1 PAR 3 298FT



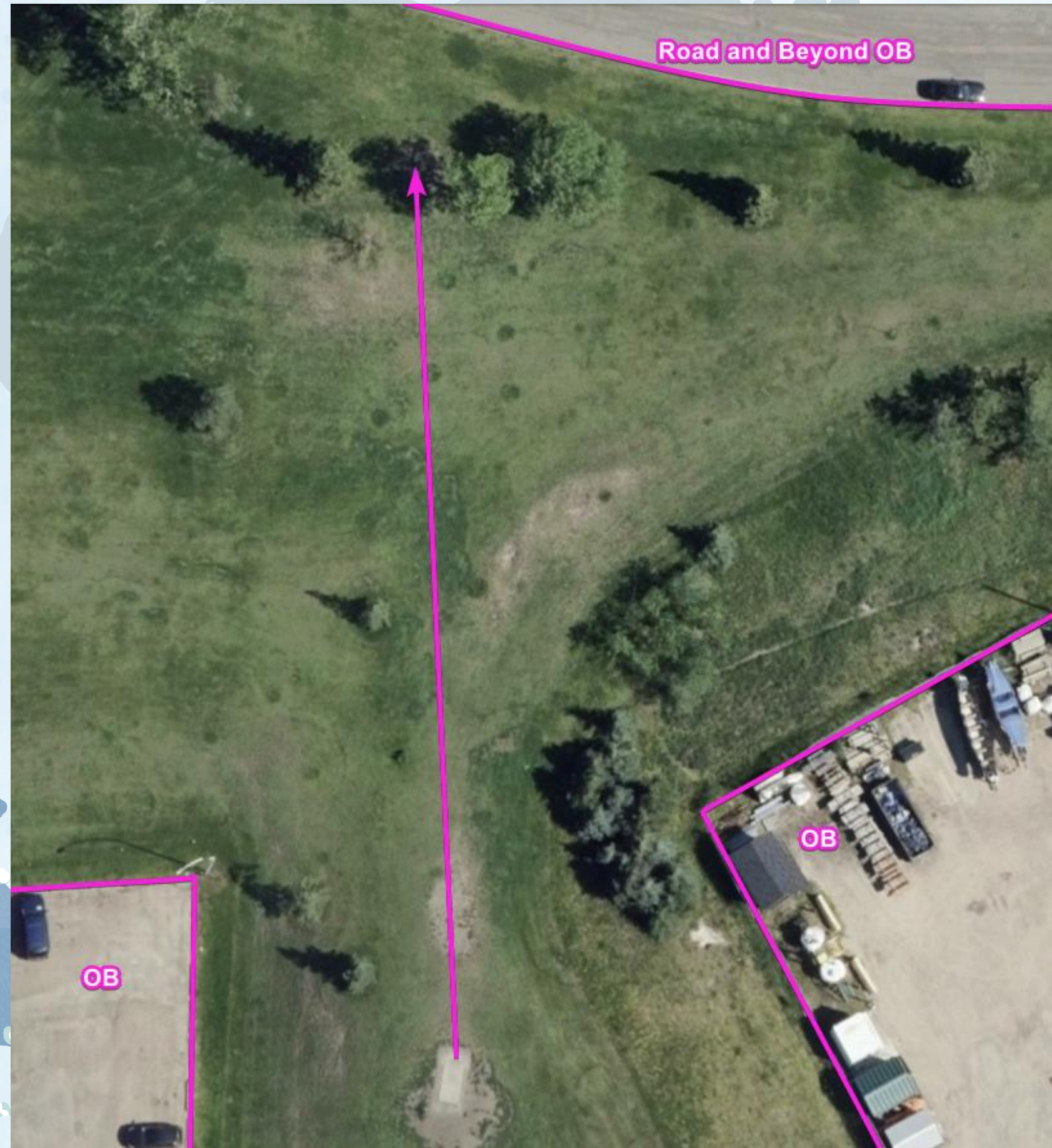
HOLE 2 PAR 3 210FT



HOLE 3 PAR 3 190FT



HOLE 4 PAR 3 243FT



HOLE 5 PAR 3 147 FT



HOLE 6 PAR 3 260FT



HOLE 7 PAR 4 / 5 573FT



HOLE 8 PAR 3 315FT



HOLE 9 PAR 3 300FT



Road and Beyond OB

HOLE 10 PAR 3 246FT



HOLE 11 PAR 3 214 FT



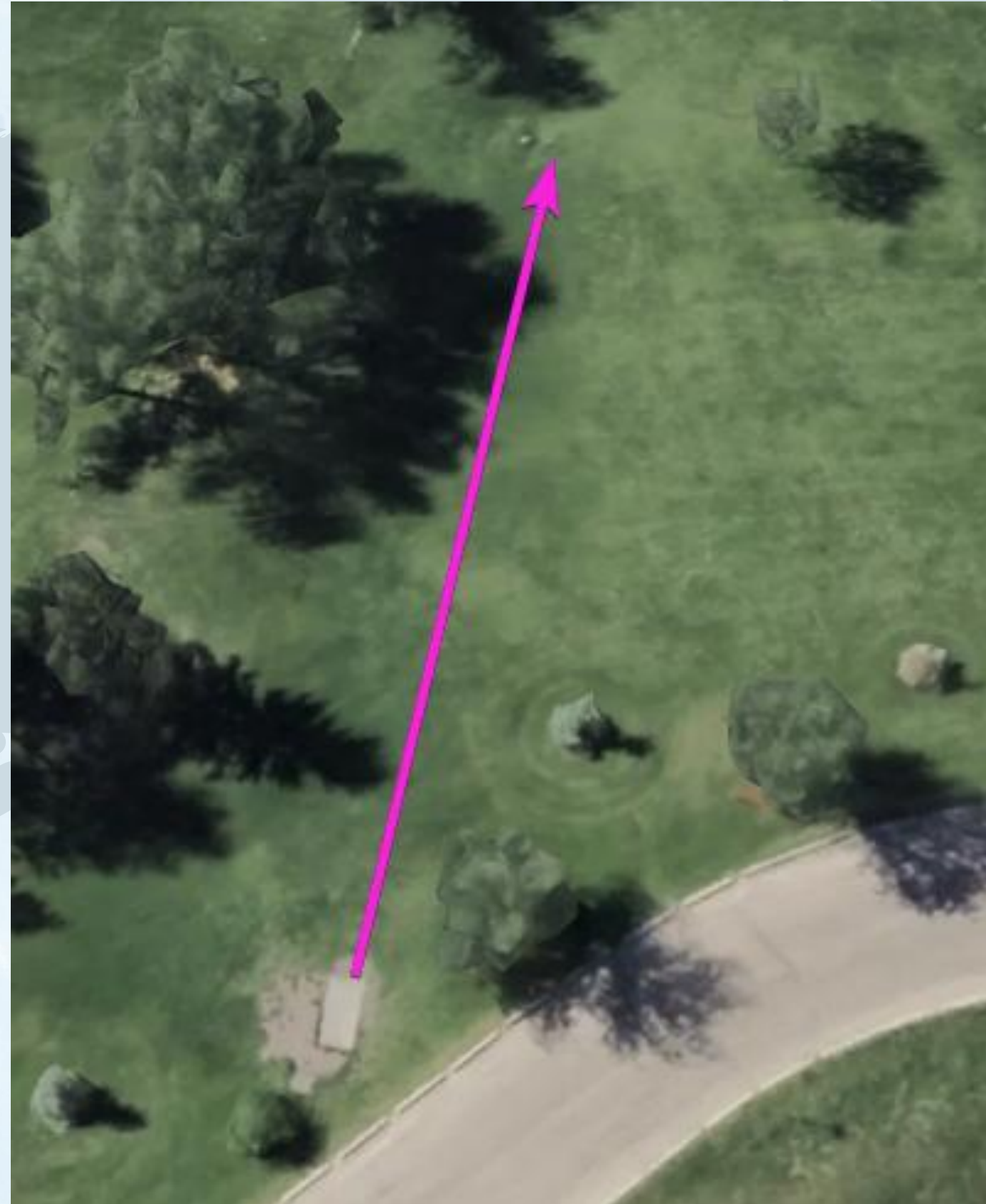
HOLE 12 PAR 3 248FT



HOLE 13 PAR 3/4 369FT



HOLE 14 PAR 3 161FT



HOLE 15 PAR 3 282FT



HOLE 16 PAR 3 249FT



HOLE 17 PAR 3 270FT



HOLE 18 PAR 4/5 574FT



HOLE 19 PAR 3 130FT



**THANK
you**

